

# TiVo® Australia/New Zealand Interface

(c) 2009-2010 My Device.

[www.mydevice.com.au](http://www.mydevice.com.au)

This driver helps to control the TiVo Series 3 HD PVR via Ethernet. It will allow you to control the PVR as well as providing 2-way feedback via variables. This driver was written using the protocol obtained from a US source and as such should work with the USA series 3 HD PVR though our testing has only been done on the Australian model.

My Device neither assumes nor accepts any liability for any loss, damage, theft, misuse, malfunction, etc. regardless of the cause or reason for any such event. My Device will not be liable for any damages (including but not limited to damages for loss of profits, business interruption or loss of information) arising out of the use of or inability to use the driver.

This driver is provided free of charge and as such we will not accept liability of any kind. If this is unacceptable please uninstall the driver immediately.

## Note:

For this driver to work you **must** enable the network remote control option in your TiVo. To do this, bring up *TiVo Central* (the main menu), select *Messages & Settings*, then *Settings*, then *Remote & Devices* and finally *Network Remote Control*. In this menu select *Enabled*.

We would **strongly** recommend that you assign the TiVo PVR with a static IP address. Leaving the unit set to DHCP means that after say a power outage the IP address of the TiVo may change when your router restarts, as the XP-8 will not be aware of the IP address change the driver will cease to control the TiVo.

Please report any bugs found to [bugs@mydevice.com.au](mailto:bugs@mydevice.com.au). Include driver version number and steps to reproduce the issue where possible.

## Contents

TiVo® Interface.....	1
Note: .....	1
Driver Configuration Settings:.....	4
IP Address Settings:.....	4
Functions:.....	4
Teleport Commands: .....	4
TiVo .....	4
Live TV .....	4
Guide .....	4
Now Playing .....	4

Set Channel Commands: .....	5
Set Channel .....	5
Force Channel Commands: .....	5
Force Channel .....	5
Key Press Commands: .....	6
Up, Down, Left and Right .....	6
TiVo .....	6
Select.....	6
Live TV & Direct TV.....	6
Thumbs.....	6
Channel Up & Down.....	6
Record .....	6
Display & Info .....	6
0 - 9 .....	6
Enter.....	6
Clear .....	6
Play, Pause, Forward, Reverse & Slow .....	7
Standbye .....	7
Now Showing .....	7
Replay.....	7
Advance.....	7
Delimiter .....	7
Guide .....	7
Aspect.....	7
Events:.....	7
Examples: .....	8

Reversing button state based on the channel playing.....	8
Creating a string index for a text box.....	9
Contact Details: .....	11

## **Driver Configuration Settings:**

### ***IP Address Settings:***

**TCP Address** – Set the IP address to the IP address of the TiVo i.e. 192.168.0.15

## **Functions:**

### ***Teleport Commands:***

#### **TiVo**

This function takes you directly to the TiVo main menu.

#### **Live TV**

This function takes you directly to free to air TV.

#### **Guide**

This function brings up the TiVo on screen EPG.

#### **Now Playing**

This function takes you directly to the recorded programs list.

When you click on the “Teleport” command you will see a drop down field called “Destination” select the teleport command you wish to use and then click on “Teleport” and drag it to your button.

## **Set Channel Commands:**

### **Set Channel**

This Function allows you to jump directly to a preset channel for example: In Brisbane the Nine Channel "GO" is assigned the channel number 99. If you click on the "Set Channel" command you will be presented with a field called "Channel" here you can enter your channel number 99 for GO! then simply click on the set channel command and drag it onto your button and you're done.

## ***Force Channel Commands:***

### **Force Channel**

This function is the same as the set channel command but it will allow you to force a channel change even if something is recording so use it with caution.

## ***Key Press Commands:***

### **Up, Down, Left and Right**

These are the commands for navigating through the TiVo menu structure.

### **TiVo**

This command takes you directly to the TiVo main menu.

### **Select**

This command allows you drill through menu structures.

### **Live TV & Direct TV**

Both commands take you directly to free to air TV (Free View).

### **Thumbs**

Thumbs up and down allows you to tell the TiVo if you like or dislike a program, refer to the TiVo manual for more information on how this works.

### **Channel Up & Down**

Allows you to navigate through the channel list.

### **Record**

Starts recording whatever show you are currently watching.

### **Display & Info**

Both commands do the same thing, which is to bring up an EPG information box on the show currently playing.

### **0 - 9**

These commands form the TiVo numerical keypad and can be used for say entering a channel number.

### **Enter**

Often used for confirming settings changes or can be pressed in conjunction with numerical keypad presses to make a channel change quicker.

### **Clear**

This command is used within menu structures for various tasks such as deleting contents or navigating

back through a menu.

## **Play, Pause, Stop, Forward, Reverse & Slow**

These commands are used during the playback of recorded content. Stop is not currently supported by TiVo but it is in the protocol so we have left it in, in case it becomes available in a future Firmware release.

## **Standby**

Places the TiVo in Standby

## **Now Showing**

This function takes you directly to the recorded programs list. It is the same as pressing the teleport command "Now Playing"

## **Replay**

Takes you backwards in a recording

## **Advance**

Toggles between the start and end of a recording.

## **Delimiter**

Currently performs no function but we have included it any way in case it becomes active in a future firmware release.

## **Guide**

Brings up the TiVo EPG and is the same as the Teleport "Guide" command.

## **Aspect**

For aspect ratio controls

## ***Events:***

Events are not featured in this driver.

## Examples:

### ***Reversing button state based on the channel playing.***

This example will walk you through creating a channel preset button that reverses state when that channel is playing.

Start by adding either a standard button or a toggle button to your page.



In the variables section of the driver browser select reversed state in the drop down and then select the channel number of your preset. ABC Two would be 22. Next click on 22 and drag it to the ABC Two button and you're done. Whenever ABC Two is playing now the state of the ABC Two button will remain reversed.

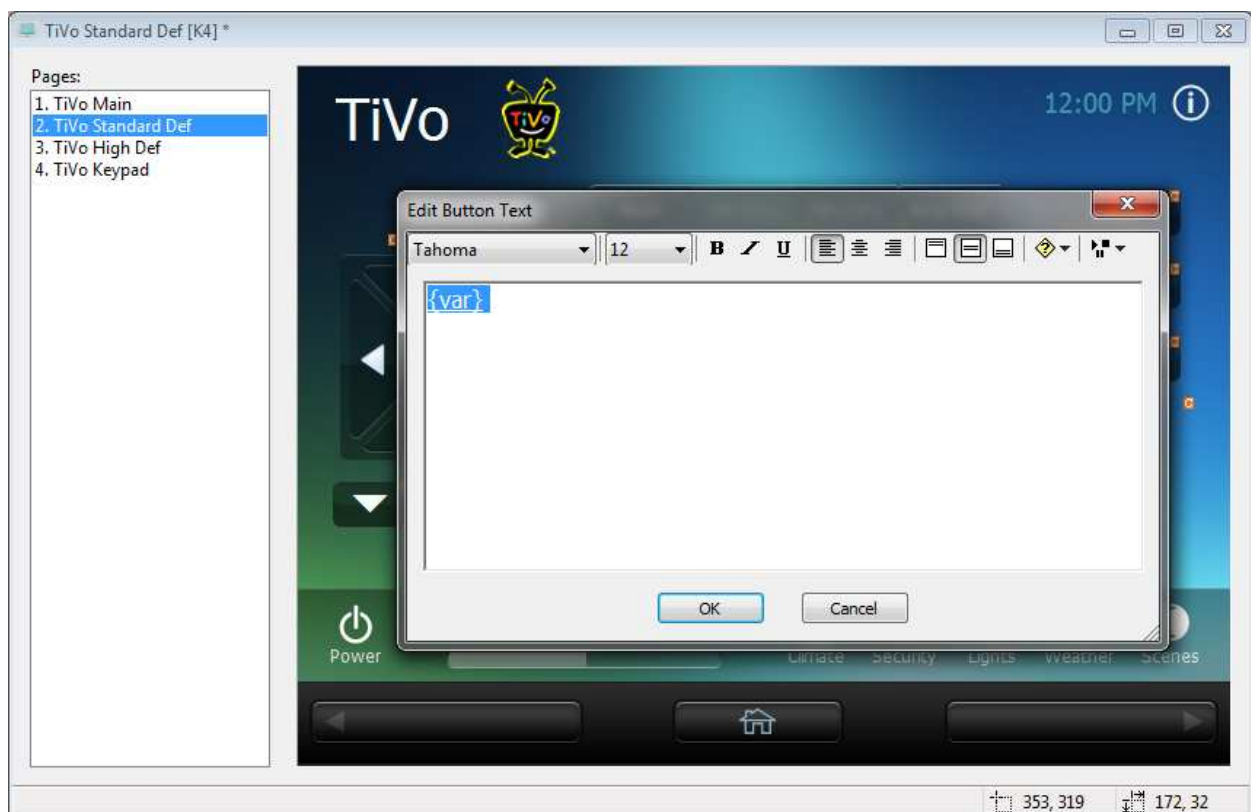


## *Creating a string index for a text box.*

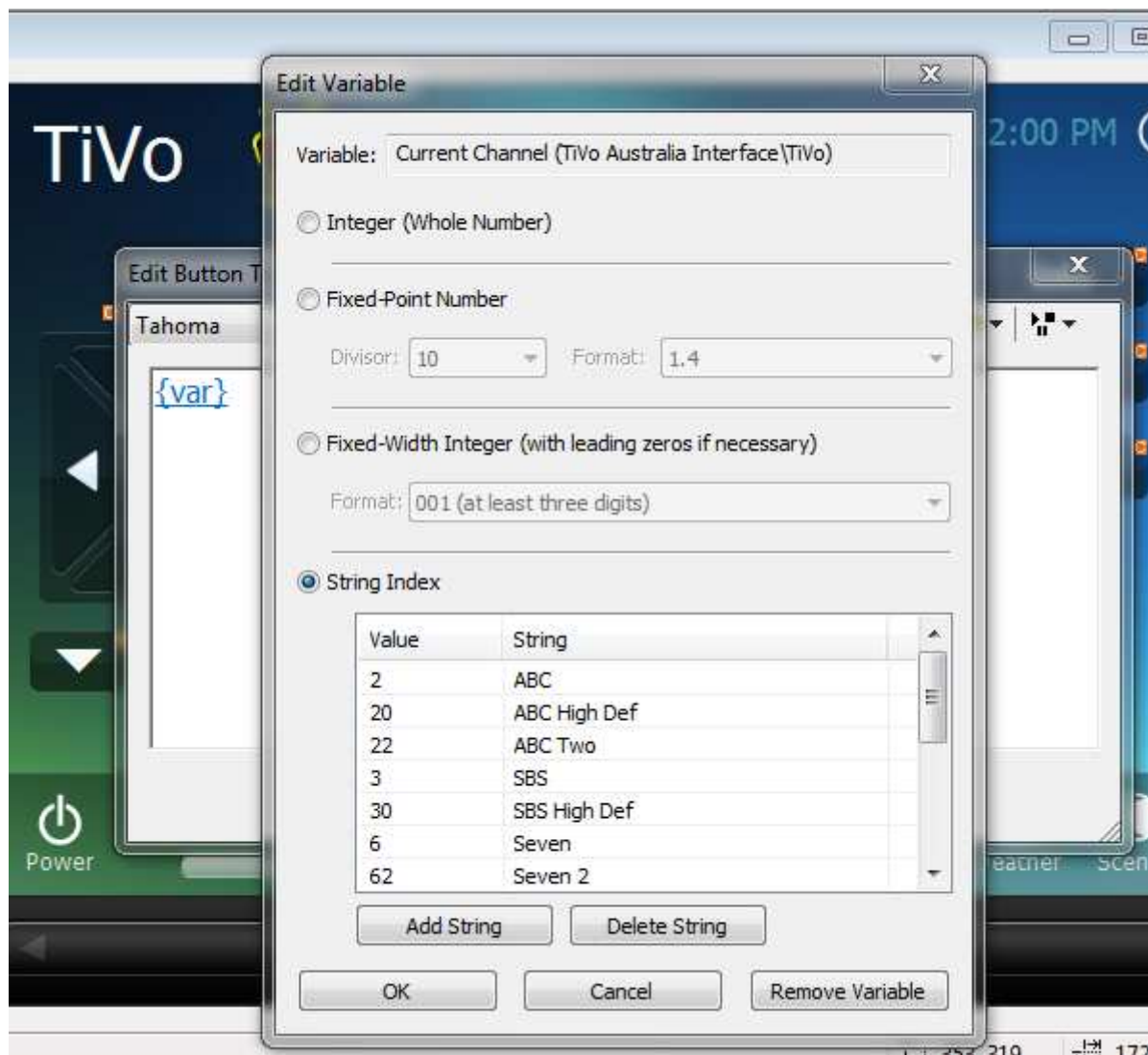
This example will walk you through creating a text box that displays the name of the channel currently playing.



Right click on the highlighted text box and select "edit text".



Click “Insert Control Variable” (yellow diamond with question mark) then select TiVo Australia Interface > TiVo > Current Channel. This will create your variable text as seen above. Click on it to edit the variable and select string index.



You will need to add a string to the index for each channel that you wish to display in the text box. The value that you give the string is very important as it is based on the number of the digital channel. So for ABC Two, which is 22 assign 22 as the value of the string. Next in the string section you will name the channel i.e.... “ABC Two” as seen above and you’re done! Repeat the process for each channel that you wish to display on the touch panel.

## Contact Details:

My Device

[www.mydevice.com.au](http://www.mydevice.com.au)

[drivers@mydevice.com.au](mailto:drivers@mydevice.com.au)

It's my device...